

NOTES:

- LEAK TEST: (SEE TABLE) PSI, NO BUBBLES (SEE TABLE) FOR MINIMUM TIMES. A GREEN PAINT DOT INDICATES THE PART HAS PASSED THE TEST.
- HYPOT 630 VDC 500 MEGOHMS MINIMUM 0.01 SECOND MINIMUM WIRE TO WIRE, FOR 0597-1, 0597-2, & 0597-7 ONLY, TEST W/LONG END IN SALT WATER, WIRE TO WIRE & WATER.
- ALL TESTS ARE PERFORMED AT ROOM TEMPERATURE.
- ALL PARTS MUST PASS ALL TESTS.
- FOR PAVE 0597-2, 0597-3, & 0597-7 USE -012 SILICONE AS ITEM 3 INSTEAD OF -012 VITON. FOR 0597-8, USE -012 VITON LT.
- WIRE COLOR ARRANGEMENT MAY VARY.
- WIRES ARE NOT REQUIRED TO BEND SHARPLY AT EPOXY SEAL SURFACE.
- DIMENSIONS ARE INCHES [millimeters].
- COSMETIC SURFACE VOIDS NOT ON O-RING SEALING SURFACES ARE ACCEPTABLE BASED ON THE SEAL'S DIAMETER:
 $\leq .5$ [12.7] SEAL DIAMETER: $\phi .035$ [.89] MAX ALLOWED VOID SIZE
 $> .5$ [12.7] SEAL DIAMETER: $\phi .060$ [1.5] MAX ALLOWED VOID SIZE
- REF-OPERATING TEMPERATURE RANGE SEE TABLE.
- PAVE-SEAL CAN BE A BI-DIRECTIONAL HERMETIC SEAL FOR VACUUM AND MOST PRESSURES. FOR PRESSURES ABOVE 150 PSI (10 BAR), CHECK WITH SALES ENGINEERING.

PAVE#	Z	X	TEST PRESSURE	TEST TIME	TEMPERATURE
0597	27.6 [700]	27.6 [700]	80 PSI	2.5 MINUTES	-20 °C TO 125 °C
0597-1	5 [127]	64 [1626]	80 PSI	3 MINUTES	-20 °C TO 125 °C
0597-2	5 [127]	36 [914]	80 PSI	2 MINUTES	-51 °C TO 125 °C
0597-3	23.6 [600]	7.9 [200]	80 PSI	1.5 MINUTES	-51 °C TO 125 °C
0597-5	59 [1500]	59 [1500]	580 PSI [40 BAR]	30 SECONDS	-20 °C TO 125 °C
0597-7	5 [127]	16 [406]	80 PSI	1 MINUTE	-51 °C TO 125 °C
0597-8	27.6 [700]	27.6 [700]	80 PSI	2.5 MINUTES	-35 °C TO 125 °C

12	1	TZ22 WHT 19	WIRE 22TZ MILW22759/44A .006 19/#34
11	1	TZ22 GREY 19	WIRE 22TZ MILW22759/44A .006 19/#34
10	1	TZ22 VIOLET 19	WIRE 22TZ MILW22759/44A .006 19/#34
9	1	TZ22 BLUE 19	WIRE 22TZ MILW22759/44A .006 19/#34
8	1	TZ22 GRN 19	WIRE 22TZ MILW22759/44A .006 19/#34
7	1	TZ22 YLW 19	WIRE 22TZ MILW22759/44A .006 19/#34
6	1	TZ22 ORG 19	WIRE 22TZ MILW22759/44A .006 19/#34
5	1	TZ22 RED 19	WIRE 22TZ MILW22759/44A .006 19/#34
4	1	TZ22 BROWN 19	WIRE 22TZ MILW22759/44A .006 19/#34
3	2	-012 VITON <small>SEE NOTE 5</small>	O-RING -012 VITON 75
2	A/R	PARKER O-LUBE	LUBRICANT O-RING BARIUM-BASED
1	1	1226L	HOUSING SP8L-E
ITEM	QTY	PART NUMBER	DESCRIPTION

PAVE technology co.

2751 Thunderhawk Court
Dayton, OH 45414-3445
U.S.A.
tel (937) 890-1100
fax (937) 8905165
www.pavetechnologyco.com

DESCRIPTION
SP8L-E-150-9-TZ22-Z-X

PART NUMBER
0597

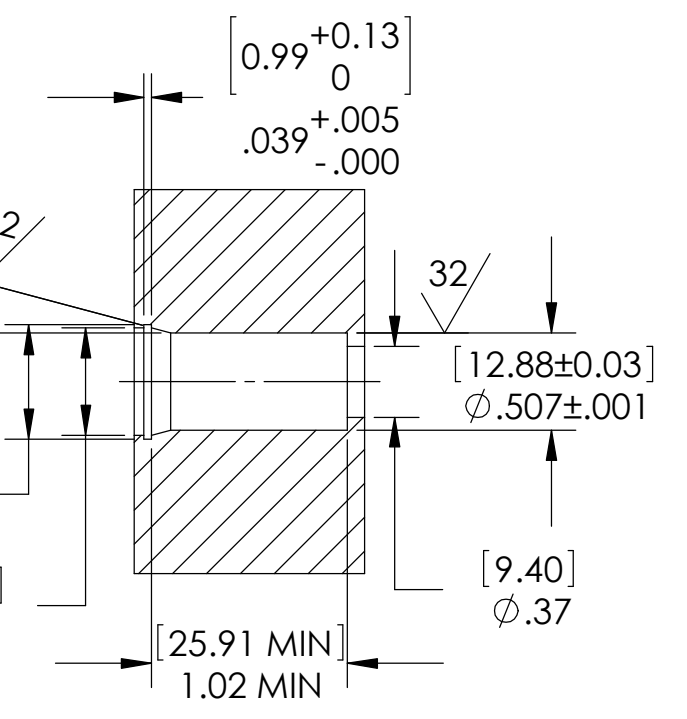
MATERIAL NOTED

REVISION LEVEL
W

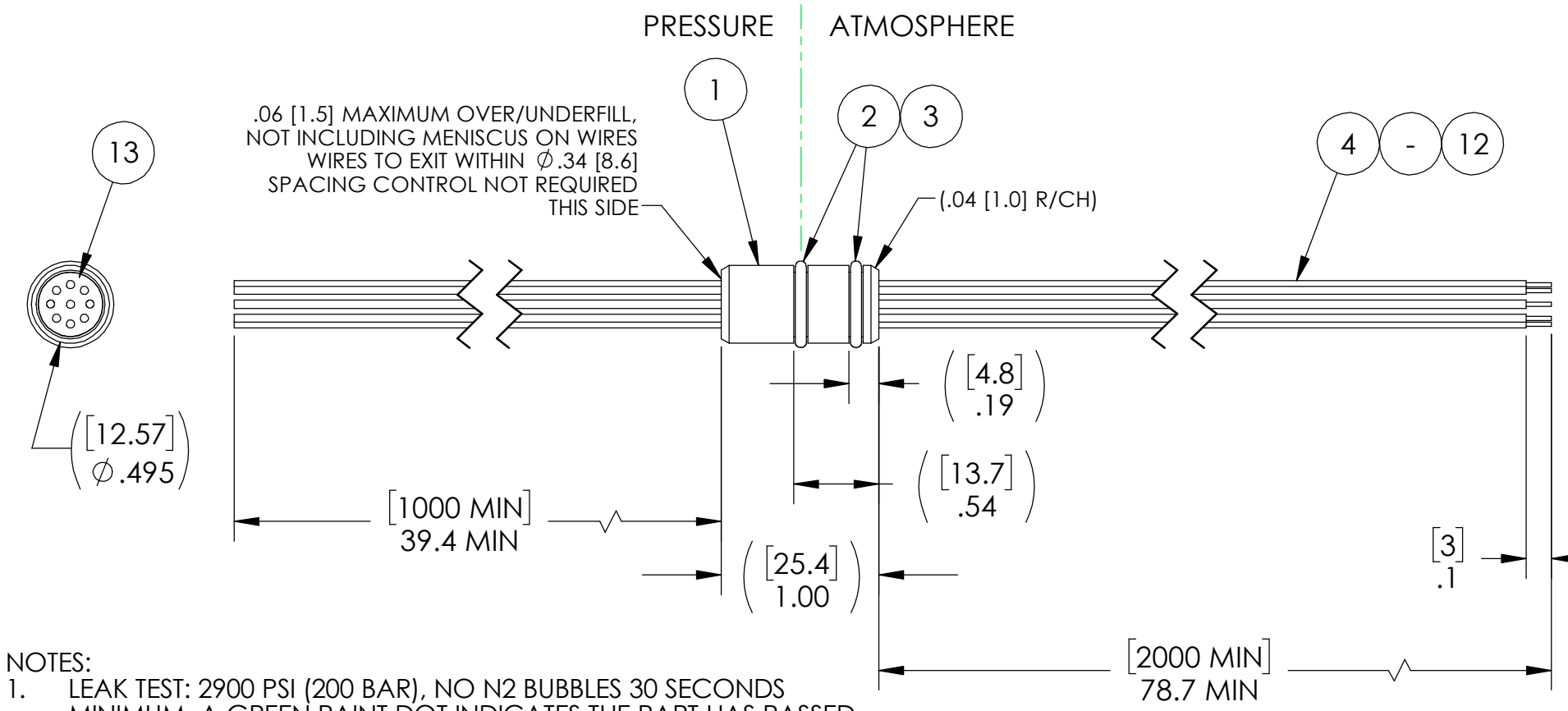
PROJECTION

ALL DIMENSIONS AND TOLERANCES APPLY TO FINISHED PART IN INCHES.
 ALLOWABLE TOLERANCES UNLESS SPECIFIED OTHERWISE: NONE ± 0.5
 X.X DECIMAL ± 0.1 X.XX DECIMAL ± 0.02 X.XXX DECIMAL ± 0.005
 ANGLES ± 1 DEGREE SURFACE FINISH 128 microinch RMS

SP8L INSTALLATION PORT



RECOMMENDED RETAINING RING
TRUARC #5000-56 OR EQUAL



.06 [1.5] MAXIMUM OVER/UNDERFILL,
NOT INCLUDING MENISCUS ON WIRES
WIRES TO EXIT WITHIN Ø.34 [8.6]
SPACING CONTROL NOT REQUIRED
THIS SIDE

NOTES:

1. LEAK TEST: 2900 PSI (200 BAR), NO N2 BUBBLES 30 SECONDS MINIMUM. A GREEN PAINT DOT INDICATES THE PART HAS PASSED THE TEST.
2. HYPOT 630 VDC 500 MEGOHMS MINIMUM 0.01 SECOND MINIMUM WIRE TO WIRE AND HOUSING.
3. ALL TESTS ARE PERFORMED AT ROOM TEMPERATURE.
4. ALL PARTS MUST PASS ALL TESTS.
5. REF-OPERATING TEMPERATURE RANGE -20 °C TO 125 °C.
6. WIRE POSITIONING IS APPROXIMATE & COLOR POSITIONS ARE VARIABLE.
7. WIRES ARE NOT REQUIRED TO BEND SHARPLY AT EPOXY SEAL SURFACE.
8. DIMENSIONS ARE INCHES [millimeters].
9. COSMETIC SURFACE VOIDS NOT ON O-RING SEALING SURFACES ARE ACCEPTABLE BASED ON THE SEAL'S DIAMETER:
<= .5 [12.7] SEAL DIAMETER: Ø.035 [.89] MAX ALLOWED VOID SIZE
> .5 [12.7] SEAL DIAMETER: Ø.060 [1.5] MAX ALLOWED VOID SIZE
10. DIMENSION IS OVER-ALL-LENGTH EXCLUDING OVERFILL ON PRESSURE SIDE OF HOUSING.
11. REF-PARTS ARE DEFLASHED ON PARTING LINE +0.005 [0.13] MAXIMUM.
12. PAVE-SEAL CAN BE A BI-DIRECTIONAL HERMETIC SEAL FOR VACUUM AND MOST PRESSURES. FOR PRESSURES ABOVE 150 PSI (10 BAR), CHECK WITH SALES ENGINEERING.

13	A/R	PAVE-Seal 150	EPOXY BLACK
12	1	TZ22 WHT 19	WIRE 22TZ M22759/44A .006 19/#34
11	1	TZ22 GREY 19	WIRE 22TZ M22759/44A .006 19/#34
10	1	TZ22 VIOLET 19	WIRE 22TZ M22759/44A .006 19/#34
9	1	TZ22 BLUE 19	WIRE 22TZ M22759/44A .006 19/#34
8	1	TZ22 GRN 19	WIRE 22TZ M22759/44A .006 19/#34
7	1	TZ22 YLW 19	WIRE 22TZ M22759/44A .006 19/#34
6	1	TZ22 ORG 19	WIRE 22TZ M22759/44A .006 19/#34
5	1	TZ22 RED 19	WIRE 22TZ M22759/44A .006 19/#34
4	1	TZ22 BROWN 19	WIRE 22TZ M22759/44A .006 19/#34
3	2	-012 VITON	O-RING -012 VITON 75
2	A/R	PARKER O-LUBE	LUBRICANT O-RING BARIUM-BASED
1	1	1226L	HOUSING SP8L-E
ITEM	QTY	PART NUMBER	DESCRIPTION

PAVE technology co.

2751 Thunderhawk Court
Dayton, OH 45414-3445
U.S.A.
tel (937) 890-1100
fax (937) 8905165
www.pavetechnologyco.com

DESCRIPTION
SP8L-E-150-9-TZ22-1m-2m

PART NUMBER
0597-6

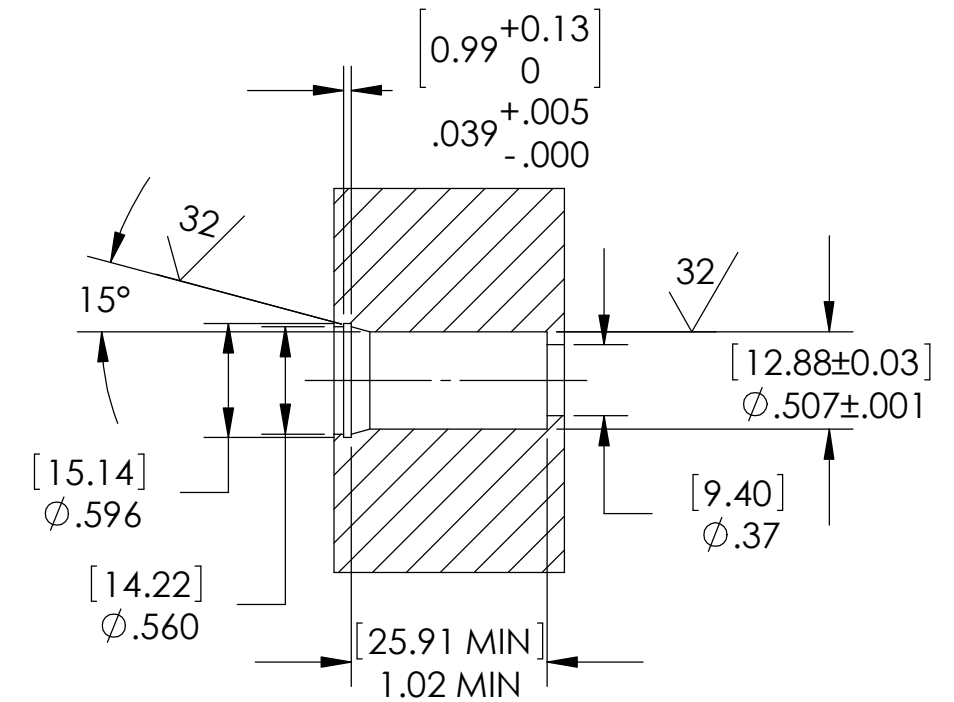
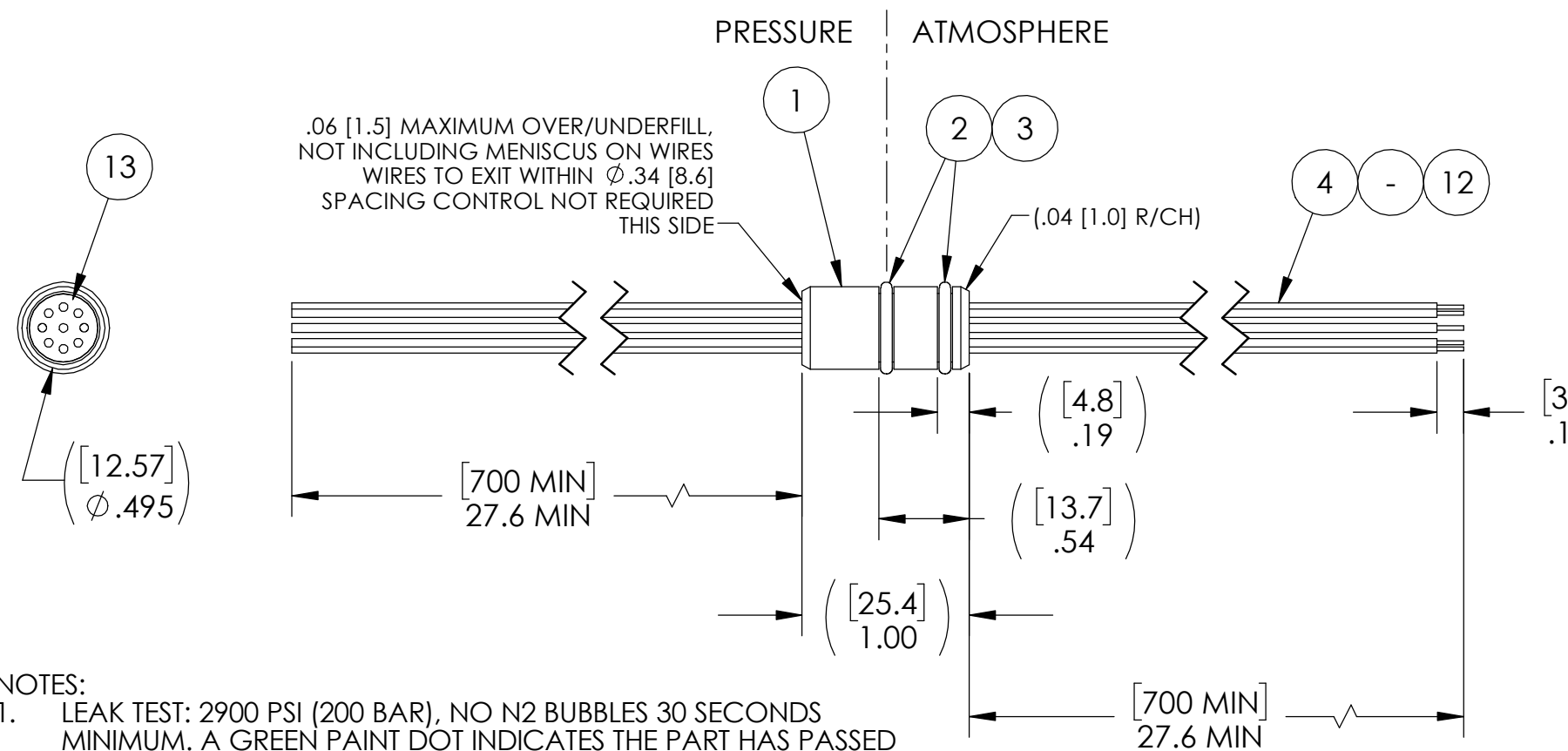
MATERIAL NOTED

REVISION LEVEL -

PROJECTION

ALL DIMENSIONS AND TOLERANCES APPLY TO FINISHED PART IN INCHES.
ALLOWABLE TOLERANCES UNLESS SPECIFIED OTHERWISE: NONE ±0.5
X.X DECIMAL ±0.1 X.XX DECIMAL ±0.02 X.XXX DECIMAL ±0.005
ANGLES ±1 DEGREE SURFACE FINISH 128 microinch RMS

SP8L INSTALLATION PORT



RECOMMENDED RETAINING RING
TRUARC #5000-56 OR EQUAL

NOTES:

1. LEAK TEST: 2900 PSI (200 BAR), NO N2 BUBBLES 30 SECONDS MINIMUM. A GREEN PAINT DOT INDICATES THE PART HAS PASSED THE TEST.
2. HYPOT 630 VDC 500 MEGOHMS MINIMUM 0.01 SECOND MINIMUM WIRE TO WIRE AND HOUSING.
3. ALL TESTS ARE PERFORMED AT ROOM TEMPERATURE.
4. ALL PARTS MUST PASS ALL TESTS.
5. REF-OPERATING TEMPERATURE RANGE -20°C TO 125°C.
6. WIRE POSITIONING IS APPROXIMATE & COLOR POSITIONS ARE VARIABLE.
7. WIRES ARE NOT REQUIRED TO BEND SHARPLY AT EPOXY SEAL SURFACE.
8. DIMENSIONS ARE INCHES [millimeters].
9. COSMETIC SURFACE VOIDS NOT ON O-RING SEALING SURFACES ARE ACCEPTABLE BASED ON THE SEAL'S DIAMETER:
 <= .5 [12.7] SEAL DIAMETER: ϕ .035 [.89] MAX ALLOWED VOID SIZE
 > .5 [12.7] SEAL DIAMETER: ϕ .060 [1.5] MAX ALLOWED VOID SIZE
10. DIMENSION IS OVER-ALL-LENGTH EXCLUDING OVERFILL ON PRESSURE SIDE OF HOUSING.
11. REF-PARTS ARE DEFLASHED ON PARTING LINE +0.005 [0.13] MAXIMUM.
12. PAVE-SEAL CAN BE A BI-DIRECTIONAL HERMETIC SEAL FOR VACUUM AND MOST PRESSURES. FOR PRESSURES ABOVE 150 PSI (10 BAR), CHECK WITH SALES ENGINEERING.

13	A/R	PAVE-Seal 150	EPOXY BLACK
12	1	TZ22 WHT 19	WIRE 22TZ M22759/44A .006 19/#34
11	1	TZ22 GREY 19	WIRE 22TZ M22759/44A .006 19/#34
10	1	TZ22 VIOLET 19	WIRE 22TZ M22759/44A .006 19/#34
9	1	TZ22 BLUE 19	WIRE 22TZ M22759/44A .006 19/#34
8	1	TZ22 GRN 19	WIRE 22TZ M22759/44A .006 19/#34
7	1	TZ22 YLW 19	WIRE 22TZ M22759/44A .006 19/#34
6	1	TZ22 ORG 19	WIRE 22TZ M22759/44A .006 19/#34
5	1	TZ22 RED 19	WIRE 22TZ M22759/44A .006 19/#34
4	1	TZ22 BROWN 19	WIRE 22TZ M22759/44A .006 19/#34
3	2	-012 VITON	O-RING -012 VITON 75
2	A/R	PARKER O-LUBE	LUBRICANT O-RING BARIUM-BASED
1	1	1226L	HOUSING SP8L-E
ITEM	QTY	PART NUMBER	DESCRIPTION

PAVE technology co.

2751 Thunderhawk Court
Dayton, OH 45414-3445
U.S.A.
tel (937) 890-1100
fax (937) 8905165
www.pavetechnologyco.com

DESCRIPTION
SP8L-E-150-9-TZ22-70cm-70cm

PART NUMBER
0597-4

MATERIAL NOTED

REVISION LEVEL -

PROJECTION

ALL DIMENSIONS AND TOLERANCES APPLY TO FINISHED PART IN INCHES.
 ALLOWABLE TOLERANCES UNLESS SPECIFIED OTHERWISE: NONE ±0.5
 X.X DECIMAL ±0.1 X.XX DECIMAL ±0.02 X.XXX DECIMAL ±0.005
 ANGLES ±1 DEGREE SURFACE FINISH 128 microinch RMS