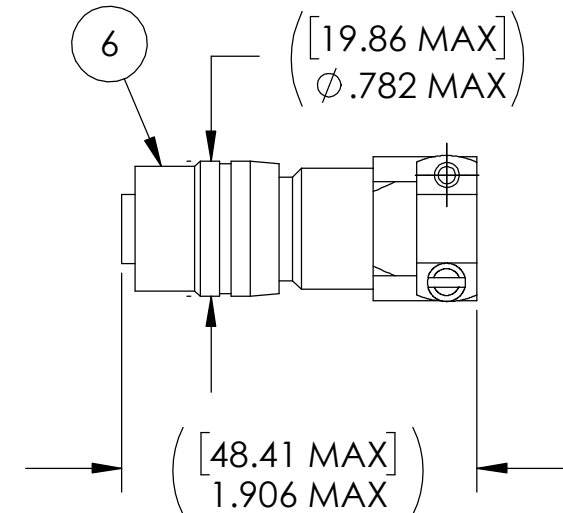
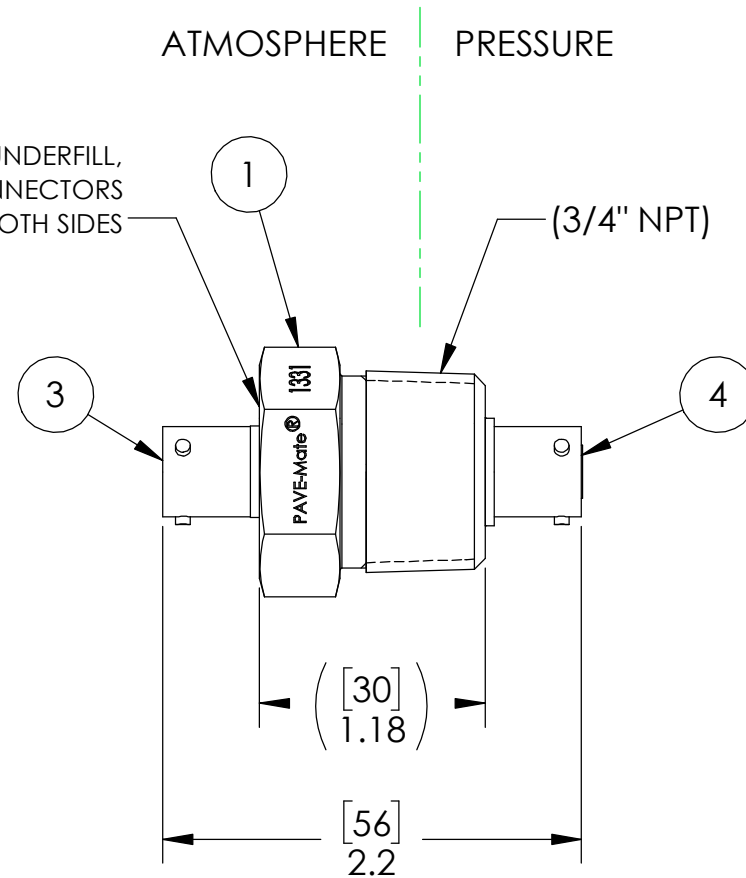
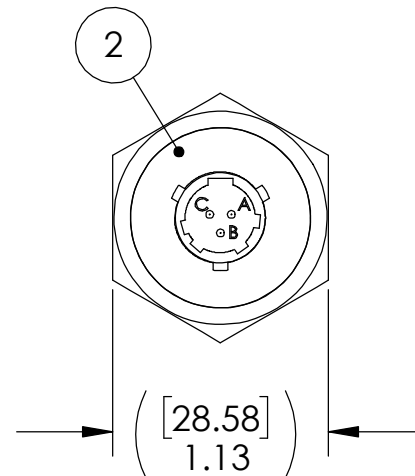


.06 [1.5] MAXIMUM OVER/UNDERFILL,
NOT INCLUDING MENISCUS ON CONNECTORS
BOTH SIDES



PAVE#	DESCRIPTION	ITEM 1	ITEM 1 DESCRIPTION
1331	PT12-B-150-3-20-3112PS	5692	HOUSING PT12-B
1331-1	PT12-SS-150-3-20-3112PS	5083	HOUSING PT12-SS

NOTES:

- LEAK TEST: 80 PSI, NO BUBBLES 30 SECONDS MINIMUM. A GREEN PAINT DOT ON THE ATMOSPHERE SIDE INDICATES THE PART HAS PASSED THE TEST.
- HYPOT 630 VDC 500 MEGOHMS MINIMUM 0.01 SECOND MINIMUM PIN TO PIN AND HOUSING WITH MATING CONNECTORS.
- CONTINUITY TEST PIN TO SOCKET <0.5 OHM WITH MATING CONNECTORS..
- ALL TESTS ARE PERFORMED AT ROOM TEMPERATURE.
- ALL PARTS MUST PASS ALL TESTS.
- COSMETIC SURFACE VOIDS NOT ON O-RING SEALING SURFACES ARE ACCEPTABLE BASED ON THE SEAL'S DIAMETER:
 <= .5 [12.7] SEAL DIAMETER: ϕ .035 [.89] MAX ALLOWED VOID SIZE
 > .5 [12.7] SEAL DIAMETER: ϕ .060 [1.5] MAX ALLOWED VOID SIZE
- REF-OPERATING TEMPERATURE RANGE -20°C TO 125°C.
- DIMENSIONS ARE INCHES [millimeters].
- PAVE-SEAL CAN BE A BI-DIRECTIONAL HERMETIC SEAL FOR VACUUM AND MOST PRESSURES. FOR PRESSURES ABOVE 150 PSI (10 BAR), CHECK WITH SALES ENGINEERING.

6	1	SC3116F8-3P	PLUG 3#20 GOLD PLATED COPPER ALLOY PINS W/ SOLDER CUP NICKEL PLATED ALUMINUM SHELL W/ STRAIN RELIEF
5	1	SC3116F8-3S	PLUG 3#20 GOLD PLATED COPPER ALLOY SOCKETS W/ SOLDER CUP NICKEL PLATED ALUMINUM SHELL W/ STRAIN RELIEF
4	1	SC3112E8-3S	RCPT 3#20 GOLD PLATED COPPER ALLOY SOCKETS, NEOPRENE INSERT, NICKEL PLATED SHELL
3	1	SC3112E8-3P	RCPT 3#20 GOLD PLATED COPPER ALLOY PINS, NEOPRENE INSERT, NICKEL PLATED SHELL
2	A/R	PAVE-Seal 150	EPOXY BLACK
1	1	SEE TABLE	SEE TABLE
ITEM	QTY	PART NUMBER	DESCRIPTION

PAVE technology co.

2751 Thunderhawk Court
Dayton, OH 45414-3445
U.S.A.
tel (937) 890-1100
fax (937) 8905165
www.pavetechnologyco.com

DESCRIPTION
SEE TABLE

PART NUMBER *SEE TABLE MATERIAL NOTED
1331*

REVISION LEVEL C PROJECTION

ALL DIMENSIONS AND TOLERANCES APPLY TO FINISHED PART IN INCHES.
ALLOWABLE TOLERANCES UNLESS SPECIFIED OTHERWISE: NONE ±0.5
X.X DECIMAL ±0.1 X.XX DECIMAL ±0.02 X.XXX DECIMAL ±0.005
ANGLES ±1 DEGREE SURFACE FINISH 128 microinch RMS